



Product Datasheet

Product Name	Anti-D Tag /Flag tag(Mouse Monoclonal)
Cata No	CB100145M
Immunogen	A synthetic peptide (DYKDDDDK) coupled to KLH.
Form	Liquid
Concentration	100ug/100ul

Specificity

Anti-D tag Antibody recognises over-expressed proteins containing D epitope tag fused to either amino- or carboxy-termini of targeted proteins in transfected mammalian cells.

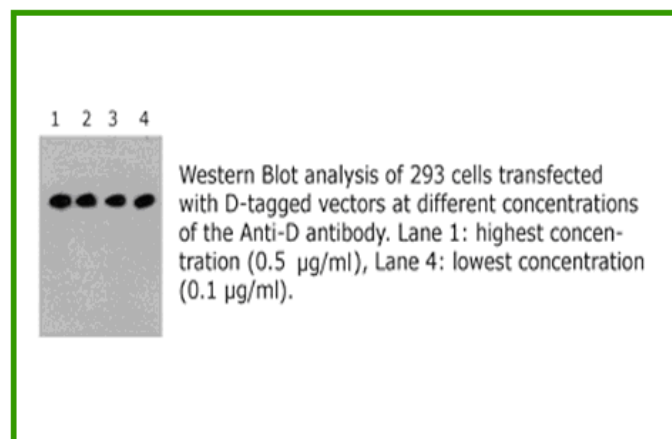
Applications

WB, IS,IFand IP. Optimal working dilutions should be determined experimentally by the investigator. Prepare working dilution immediately before use. Suggested starting dilutions are as follows: Western

Blot at dilutions of 1:2000. Immunoprecipitation and immunostaining at dilutions of 1:200.

Storage

Storage Buffer :PBS, pH 7.4 with 0.05% sodium azide.Stable for 1 year at -20°C from date of shipment. For maximum recovery of product, centrifuge the original vial after thawing and prior to removing the cap. Aliquot to avoid repeated freezing and thawing. Aliquot will be stale at 4°C for 3 months.



*** For Non-Clinical Research Use Only ***